

# PHOENIX SONORAN PRESERVE

Post ID: In the case of emergency, this post id number assists in search and rescue operations

Current elevation: 1779 ft

Current distance traveled (if you began at the start of the trail): 1.25 mi / 2.00 km

QR Codes: Using a smartphone and any QR software to get more info, current updates or even a map of your current location!

Scan for more trail info: Your current coordinates: 33.776290 -112.018225

In case of emergency call 911

Trail Initial: designed to be big and bold for easy legibility on the trail

Trail Name: Sonoran Preserve - Esplanade Trail

Park Name: Sonoran Preserve

Directional Arrow: Helps you stay on the correct trail

Please stay on trails

### Northern Area Trails

Trail Name	Miles	Trail Surface	Trail Rating
Apache Wash Loop	5.59	Native Soil	●
Apache Vista Trail	0.5	Native Soil	■
Badger Brawl Trail	3.39	Native Soil	●
Cliff Walk Trail	2.88	Native Soil	●
Esplanade Trail	3.4	Native Soil	●
Ocotillo Trail	6.25	Native Soil	●
Ridgeback Trail	1.53	Native Soil	■
Ridgeback Overlook	0.24	Native Soil	■
Sidewinder Trail	6.98	Native Soil	◆
West Skip Rimza Paseo	1.9	Concrete	○
East Skip Rimza Paseo	3.1	Concrete	○

### Southern Area Trails

Trail Name	Miles	Trail Surface	Trail Rating
Bobcat Trail	1.01	Native Soil	●
Cactus Wren Trail	1.41	Native Soil	■
Desert Tortoise Trail	1.1	Native Soil	■
Dixie Mountain Loop	3.82	Native Soil	◆
Dixie Summit Trail	0.22	Native Soil	◆
Great Horned Owl Trail	3.1	Native Soil	■
Hawk's Nest Trail	0.39	Native Soil	■
Union Peak Trail	0.45	Native Soil	◆
Western Vista Trail	0.34	Native Soil	◆
Valle Verde Trail	1.2	Native Soil	■

Walk-In Access, no parking available

Trailhead parking lot

Scale: 0 to 1 mile

### Trail Ratings

During the hotter months when the temperature and/or humidity is high, trails are rated at least one level higher

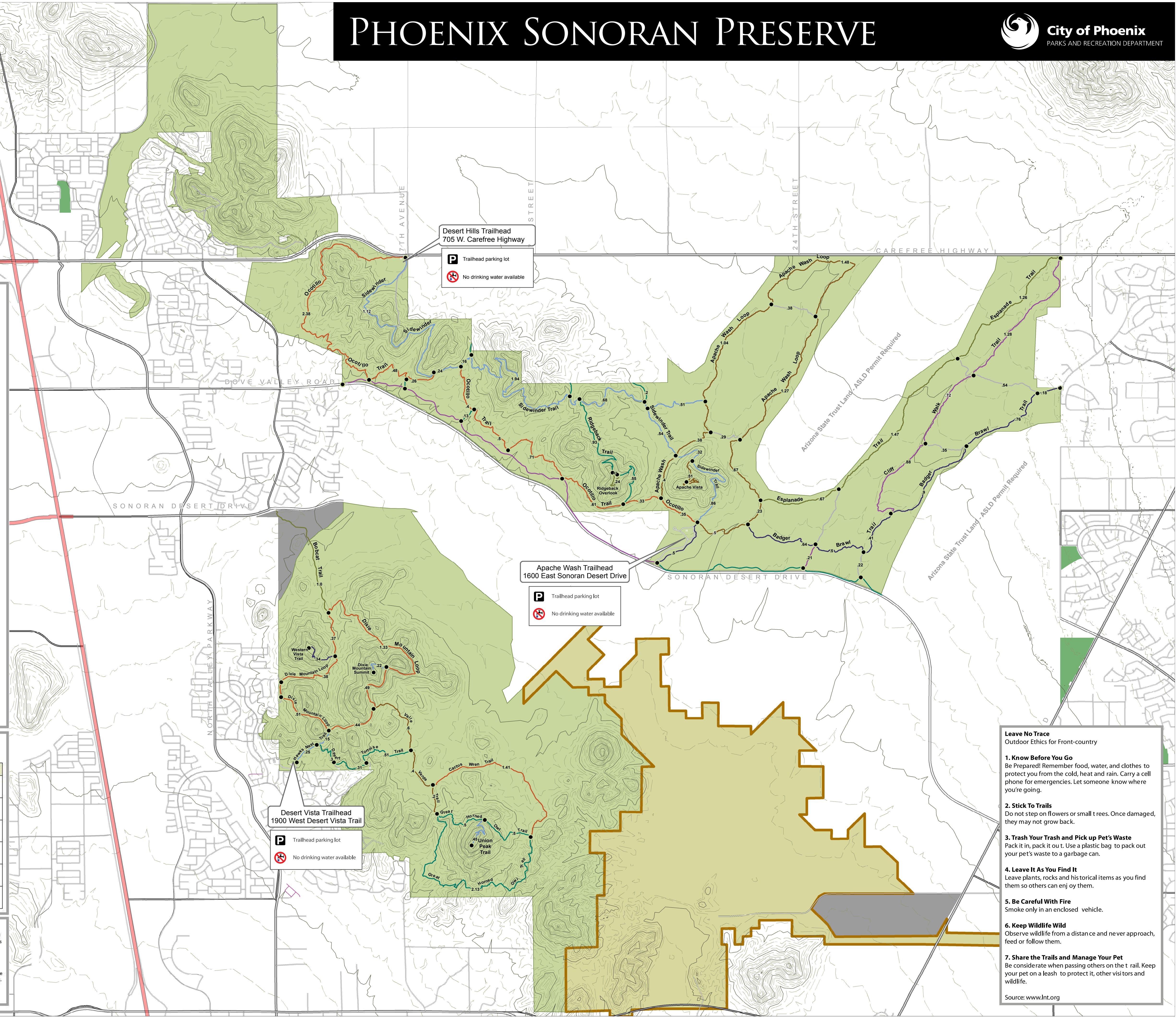
Rating Symbol	Definition	Slope or Grade
○ easiest	Paved accessible trail that is hard and smooth with no obstacles or steps	
● easy	Mostly smooth & wide, dirt with occasional unevenness and rocks & ruts that are less than 2"	
■ moderate	Mostly smooth but variable width, dirt with occasional unevenness & rocks and ruts that are up to 8" with loose material	
◆ moderately difficult	Mostly uneven surface with dirt & rocks, some rocks & ruts are up to 12" with loose material	
◆ difficult	Long rocky segments with drops & exposure, dirt & loose rocks larger than 12" with continual unevenness	
◆ extremely difficult	Long rocky segments with drops & exposure, dirt & loose rocks larger than 12" with continual unevenness and heat > 90F (32C)	

### Important Phone Numbers

Emergency: 911  
 Crimestop: 602-262-6151  
 Sonoran Preserve Ranger Office: 602-262-7901  
 Website: phoenix.gov/parks/trails

### Hiking Safety Information

Tell someone where you will be hiking and when you expect to return. Know the name of the park and trail you will be hiking on. Having a trail map is recommended. Know where you are going and what kind of terrain you will be hiking on. It is important to remember that the Phoenix Mountain Preserves are open, undeveloped desert areas. Hikers can encounter rocky terrain, rattlesnakes and other potential hazards native to the Sonoran Desert. Bring plenty of water (one quart for short hikes, more for longer hikes). Wear appropriate footwear, preferably hiking boots. Wear light colored, comfortable clothing. Bring a hat, sunblock, basic first aid supplies and cell phone.



**Desert Hills Trailhead**  
705 W. Carefree Highway

Trailhead parking lot

No drinking water available

**Apache Wash Trailhead**  
1600 East Sonoran Desert Drive

Trailhead parking lot

No drinking water available

**Desert Vista Trailhead**  
1900 West Desert Vista Trail

Trailhead parking lot

No drinking water available

- ### Leave No Trace
- Outdoor Ethics for Front-country
- 1. Know Before You Go**  
Be Prepared! Remember food, water, and clothes to protect you from the cold, heat and rain. Carry a cell phone for emergencies. Let someone know where you're going.
  - 2. Stick To Trails**  
Do not step on flowers or small trees. Once damaged, they may not grow back.
  - 3. Trash Your Trash and Pick up Pet's Waste**  
Pack it in, pack it out. Use a plastic bag to pack out your pet's waste to a garbage can.
  - 4. Leave It As You Find It**  
Leave plants, rocks and his torical items as you find them so others can enjoy them.
  - 5. Be Careful With Fire**  
Smoke only in an enclosed vehicle.
  - 6. Keep Wildlife Wild**  
Observe wildlife from a distance and never approach, feed or follow them.
  - 7. Share the Trails and Manage Your Pet**  
Be considerate when passing others on the trail. Keep your pet on a leash to protect it, other visitors and wildlife.
- Source: www.Int.org