



## **CONTACT INFORMATION**

Mining Records Curator  
Arizona Geological Survey  
1520 West Adams St.  
Phoenix, AZ 85007  
602-771-1601  
<http://www.azgs.az.gov>  
[inquiries@azgs.az.gov](mailto:inquiries@azgs.az.gov)

The following file is part of the

Arizona Department of Mines and Mineral Resources Mining Collection

## **ACCESS STATEMENT**

These digitized collections are accessible for purposes of education and research. We have indicated what we know about copyright and rights of privacy, publicity, or trademark. Due to the nature of archival collections, we are not always able to identify this information. We are eager to hear from any rights owners, so that we may obtain accurate information. Upon request, we will remove material from public view while we address a rights issue.

## **CONSTRAINTS STATEMENT**

The Arizona Geological Survey does not claim to control all rights for all materials in its collection. These rights include, but are not limited to: copyright, privacy rights, and cultural protection rights. The User hereby assumes all responsibility for obtaining any rights to use the material in excess of "fair use."

The Survey makes no intellectual property claims to the products created by individual authors in the manuscript collections, except when the author deeded those rights to the Survey or when those authors were employed by the State of Arizona and created intellectual products as a function of their official duties. The Survey does maintain property rights to the physical and digital representations of the works.

## **QUALITY STATEMENT**

The Arizona Geological Survey is not responsible for the accuracy of the records, information, or opinions that may be contained in the files. The Survey collects, catalogs, and archives data on mineral properties regardless of its views of the veracity or accuracy of those data.

PRINTED: 06/08/2001

ARIZONA DEPARTMENT OF MINES AND MINERAL RESOURCES AZMILS DATA

PRIMARY NAME: BLUE DICK

ALTERNATE NAMES:

SLATE CREEK MINING COMPANY  
PATENTED CLAIMS MS 423  
PATENTED CLAIMS MS 2943

YAVAPAI COUNTY MILS NUMBER: 1155C

LOCATION: TOWNSHIP 12 N RANGE 2 W SECTION 4 QUARTER W2  
LATITUDE: N 34DEG 24MIN 40SEC LONGITUDE: W 112DEG 26MIN 35SEC  
TOPO MAP NAME: GROOM CREEK - 7.5 MIN

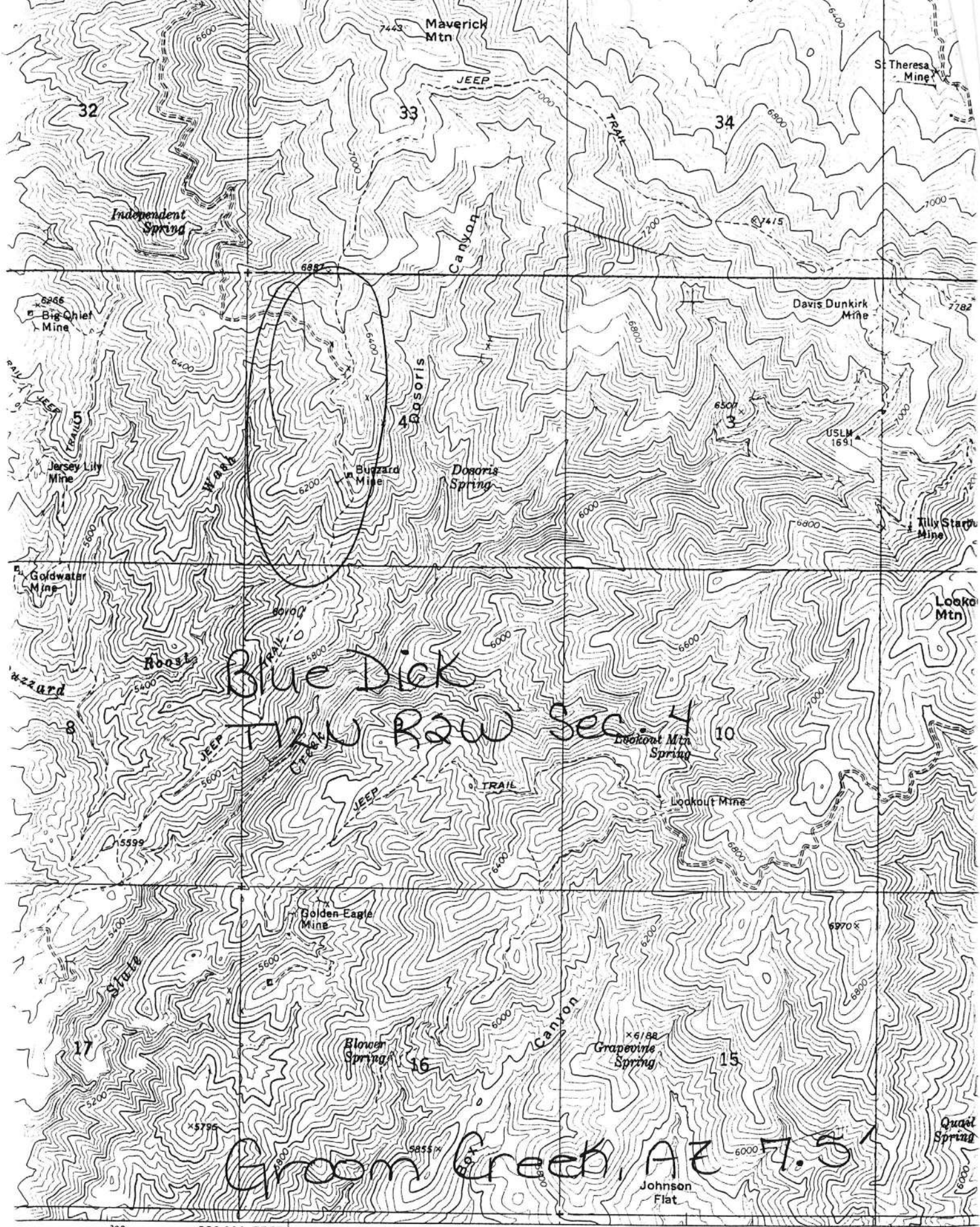
CURRENT STATUS: PAST PRODUCER

COMMODITY:

SILVER  
LEAD  
GOLD  
ZINC  
COPPER

BIBLIOGRAPHY:

USGS GROOM CREEK QUAD  
BLM MINING DISTRICT SHEET 242  
YAVAPAI MAGAZINE MAY 1918 P 3-6, JUNE 1921  
P 10 SHARLOT HALL MUSEUM PRESCOTT, AZ  
AZ MINING JOURNAL APRIL 1919 P 15  
LINDGREN, W. ORE DEPTS OF JEROME AND BRADSHAW  
MTNS QUADS USGS BULL 782 1926 P 117-118  
ADMMR BLUE DICK FILE, USGS CRIB INFORMATION



BLUE DICK MINE+

YAVAPAI COUNTY

RRB WR 7/8/83: Al Goettel (work phone 243-5263) owner of the Blue Dick claims near Prescott, reports that Charles Porter, manager of the C.O.D. Mine in Mohave County, wants to lease the Blue Dick Claims. He says that they have already picked up numerous claims nearby that had been held by Homestake. He also said that they are installing a crusher, lab, etc. next to the Pepsi plant in the industrial park on the road out to the Dels.

---

~~NO NOT REPRODUCED~~

\* GENERAL REFERENCES

REFERENCE 1 P1 < USGM - ABGNT FILE DATA

1 - file MILS p-8118

REFERENCE 2 P2 < ABGNT CLIPPINGS FILES

REFERENCE 3 P3 < USGS Bull 782, p. 117-118

REFERENCE 4 P4 < USGS 60 MAP 60 997

U.S. CRIB-SITE FORM

RECORD IDENTIFICATION

RECORD NUMBER B10 < \_\_\_\_\_ >

RECORD TYPE B20 < X, I, M >

DEPOSIT NUMBER B40 < \_\_\_\_\_ >

REPORT DATE G1 < 8, 1, 12 >  
YR. MO.

INFORMATION SOURCE B30 < 1, 2 >

FILE LINK IDENT. B50 < USGM-004 025 0253 >

REPORTER(SUPERVISOR) G2 < DEWITT, ED, H. >  
(last, first, middle initial)

(last, first, middle initial)

REPORTER AFFILIATION G5 < USGS >

SITE NAME A10 < BLUE DICK MINE >

ONYMS A11 < \_\_\_\_\_ >

LOCATION

MINING DISTRICT/AREA A30 < HASSAYAMPA DISTRICT >

COUNTY A60 < YAVAPAI >

STATE A80 < A.Z. >

COUNTRY A40 < U.S. >

PHYSIOGRAPHIC PROV A63 < 1, 2, 3 >

DRAINAGE AREA A62 < 1, 5, 0, 7, 0, 1, 0, 3, 4 >

LAND STATUS A64 < \_\_\_\_\_ >

QUADRANGLE NAME A90 < CROOM CREEK >

(1, 9, 7, 4)

QUADRANGLE SCALE A100 < 24, 0, 0, 0 >

SECOND QUAD NAME A92 < \_\_\_\_\_ >

(1, 1, 1, 1)

SECOND QUAD SCALE A91 < \_\_\_\_\_ >

ELEVATION A107 < 1, 6, 4, 6, 0, 0, 0, F.T. >

UTM

NORTHING A120 < 3, 9, 0, 9, 7, 8, 0 >

EASTING A130 < 3, 6, 4, 2, 3, 0 >

ZONE NUMBER A110 < 1, 1, 2 >

ACCURACY

ACCURATE ACC (circle)

ESTIMATED EST < \_\_\_\_\_ >

GEODETC

LATITUDE A70 < \_\_\_\_\_ N >

LONGITUDE A80 < \_\_\_\_\_ W >

CADASTRAL

TOWNSHIP(S) A77 < 0, 1, 2, N, 1, 2, 3, 4, 5, 6, 7, 8, 9 >

RANGE(S) A78 < 0, 0, 2, W, 1, 2, 3, 4, 5, 6, 7, 8, 9 >

SECTION(S) A79 < 04 >

SECTION FRACTION(S) A76 < NW >

MERIDIAN(S) A81 < GILA AND SALT RIVER >

POSITION FROM NEAREST PROMINENT LOCALITY A82 < 1.0 MILES DUE SOUTH OF MAVERICK MOUNTAIN >

LOCATION COMMENTS A83 < ON EAST SIDE OF RIDGE, JUST WEST OF MARK TWIN MINE >

ESSENTIAL INFORMATION

ESSENTIAL SOMETIMES OR HIGHLY RECOMMENDED

